

M. Lescan

Early experiences with the Relay Double Branch graft

Disclosure

Speaker name:

Mario Lescan, MD

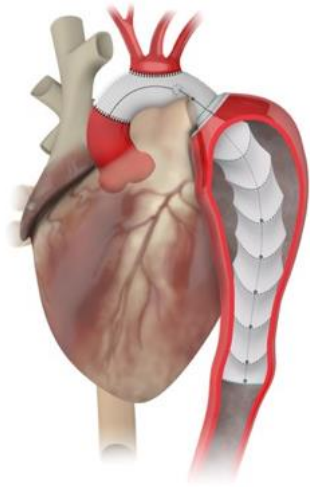
I have the following potential conflicts of interest to report:

- Consulting
- Employment in industry
- Stockholder of a healthcare company
- Owner of a healthcare company
- Other(s)

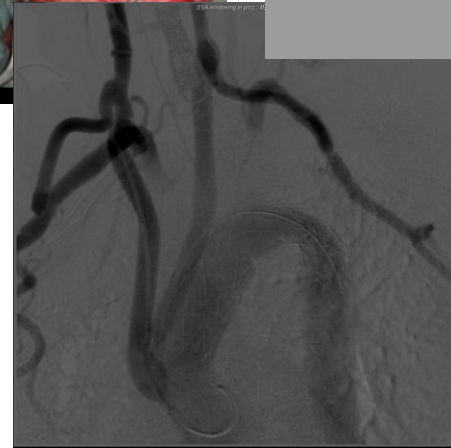
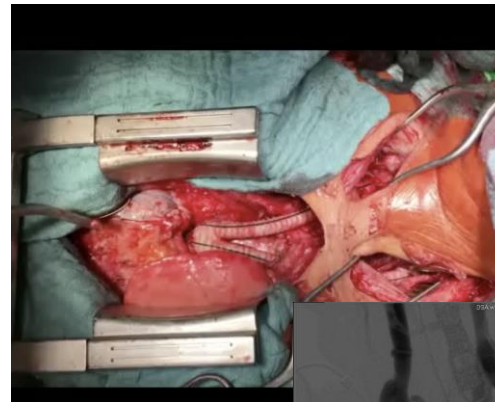
I do not have any potential conflict of interest

Aortic arch surgery nowadays

Frozen elephant trunk



Debranching



New development – the „double branch Relay“ graft (custom made)

Total Orthotope Endovascular Aortic Arch Repair

- Relay NBS graft with a window for perfusion of supraaortic trunks
- two inner tunnels with locking stents for the arch branches



The experience is growing

Current presentations and literature :

Techniques For And Long-Term Results Of Treating Zone 0 Aortic Arch Lesions Endovascularly: Including The Use Of Bolton's Branched TEVAR Device

Toru Kuratani. Veith Symposium in NYC 2016

Value and 3-year results with branched endograft from Bolton for treating complex arch lesions

Toru Kuratani. Veith Symposium in NYC 2015

Arch Repair with Bolton RelayBranch Thoracic Stent-Graft system

Joost van Herwaarden, MD, PhD.

LINC Congress, Leipzig, 2017

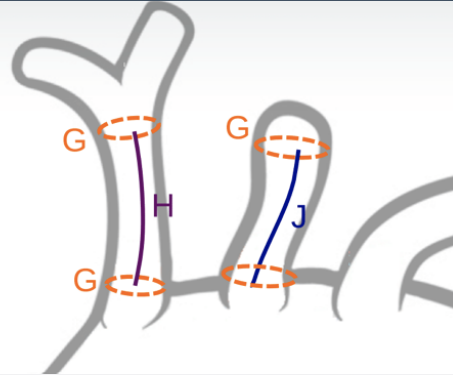
Combined experience of the Bolton Medical RelayBranch Thoracic Stent-Graft system from Freiburg, Toulouse, Tübingen, and Utrecht (n=15)

Article in press, Czerny et al, 2017

Anatomical requirements

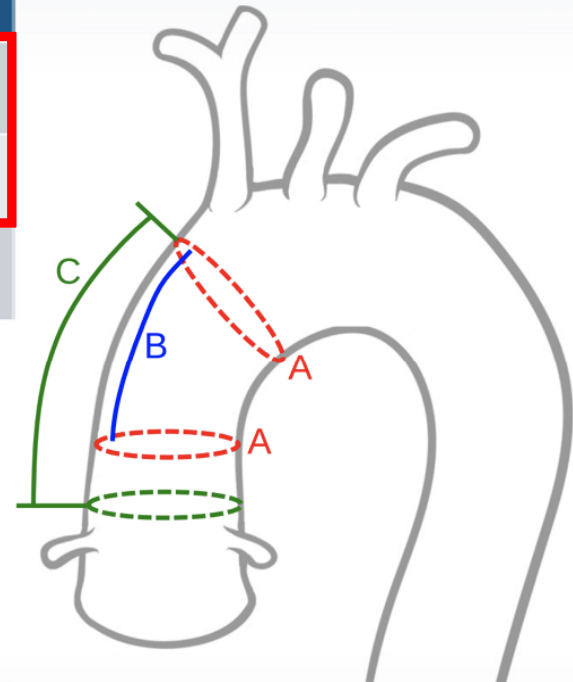
Anatomical Requirements:

G	BCT and LCCA diameter	7-20mm
H	BCT landing zone length	25mm
J	LCCA landing zone length	25mm



Anatomical Requirements:

A	Ascending aorta landing zone <u>diameter</u>	29-43mm
B	Ascending aorta landing zone <u>length</u>	30mm (+10mm of contact)
C	Sinotubular Junction to BCT <u>length</u>	>65mm or >85mm*



Open surgical part of the procedure

Main body 24-25 Fr.

✓ femoral cutdown

Branches 14 F

✓ cutdown on both sides to LCA, RCA

LSA preservation

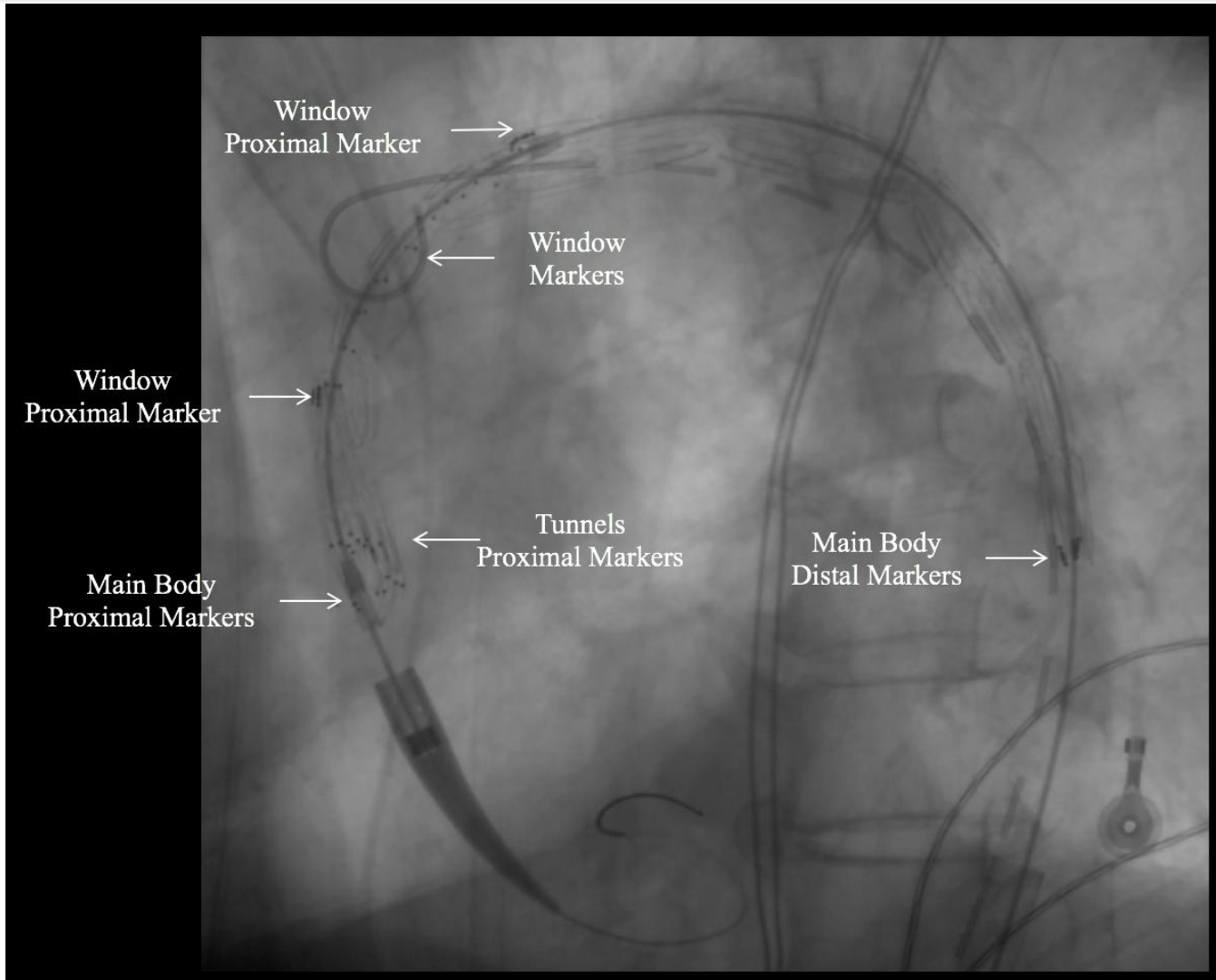
✓ Bypass rather than transposition

✓ more freedom during branch deployment

✓ proximal anastomosis near carotid bifurcation



Radiopaque markers



Endovascular part of the procedure



CT scan before and after DB implantation

Aortenaneurysma vor und nach minimalinvasiver Therapie



Thank You for Your attention!